



ELSTON



Four bedroom detached family home with integral garage

This home features...

Beautifully designed SieMatic kitchen by Stuart Frazer with integrated NEFF appliances

Open plan kitchen/dining/entertainment area with bi-fold doors & utility room

Four double bedrooms, two with ensuites

Large family bathroom and a spacious lounge

Downstairs study, cloakroom and store room

Generous turfed and fenced gardens

Single garage and paved parking area for two cars

Quality fixtures & fittings throughout

Prestige Collection

ELSTON

1792 ft² / 167m² Four bedroom detached home with integral garage



GROUND FLOOR

Kitchen / Dining

8.0m x 4.7m
26' 3" x 15' 5"

Lounge

3.4 x 5.6m (Max)
11' 2" x 18' 5" (Max)

Store

1.7m x 0.9m
5' 7" x 3' 0"

Utility

2.8m x 2.2m
9' 3" x 7' 3"

Study

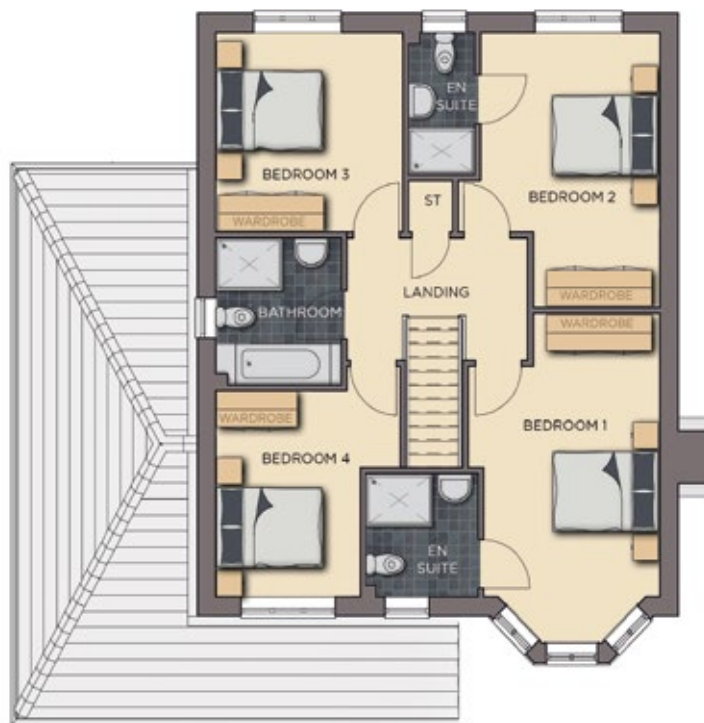
3.2m x 2.3m
10' 6" x 7' 7"

Garage

6.0m x 3.1m (Max)
19' 9" x 10' 2" (Max)

WC

1.7 x 1.4m
5' 7" x 4' 7"



FIRST FLOOR

Master Bedroom

5.6m x 3.5m (Max)
18' 5" x 11' 6" (Max)

En-suite 2

2.4m x 1.2m
7' 11" x 4' 0"

Bathroom

2.5m x 2.3m
8' 3" x 7' 7"

En-suite

1.2.1m x 2.0m
6' 11" x 6' 7"

Bedroom 3

3.4m x 3.4m
11' 2" x 11' 2"

Store

0.9m x 0.8m
3' 0" x 2' 8"

Bedroom 2

4.7m x 3.6m (Max)
15' 5" x 11' 10" (Max)

Bedroom 4

3.5m x 3.3m (Max)
11' 6" x 10' 10" (Max)

Benefits include...

Beautiful SieMatic kitchen by Stuart Frazer with integrated NEFF appliances & Essentials wine cooler | 5 burner induction hob and glass splashback | Skylights & bifold doors leading to fully fenced & turfed garden with patio | White Vitra sanitaryware with Hansgrohe fittings | Porcelanosa tiling | Heated towel rails | Worcester Bosch heating system | USB points, brushed chrome sockets & downlighters | Panelled Oak Shaker doors | White painted staircase with Oak handrails & newel posts | Neutral decor throughout | Security alarm | Smoke alarm | Fibre optic BT masterboxes | Front landscaping and turfing | Exterior lighting | Integral Double Garage | Block-paved private driveway for additional two cars | Fast car charging point | 10 year warranty... and so much more

++ See Create Homes' specification sheet for full details ++

The dimensions given are approximate only. Artist impressions are for illustrative purposes only.